

# Forcus

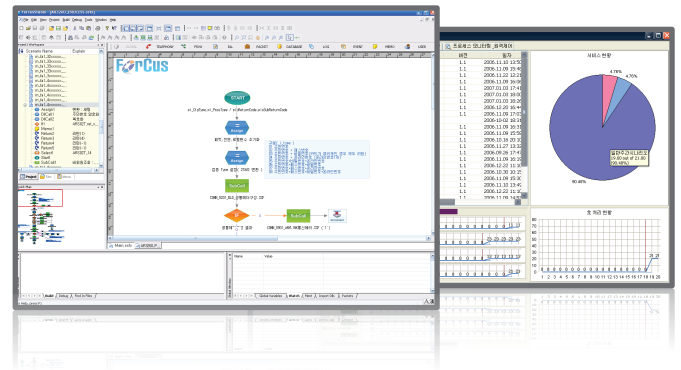
Quick & easy solution for enhanced service development

## Overview

Forcus is a service generator based on high-capacity media processing solution, designed to assist media management and content development.

Forcus GUI development tools can create a wide range of channels including voice, video, Internet protocol(IP), and traditional time-division multiplex (TDM) services on a single platform.

The dynamic menu function can be modified during execution to make business strategy more flexible.



## Benefit

### ✔ Enhanced channel service for CRM

- Creates CRM channel service using a flexible menu system during execution
- Supports customized service to offer personalized service
- Enables effective media-based marketing

### ✔ Quick & easy development

- Drag & Drop GUI
- Improved productivity and management efficiency through object-based development
- Anyone can change the complex scenario in difficult system environment
- Easier maintenance due to improved High readability makes efficient system
- Supports Visual Debugging

### ✔ Multi service, multi scenario, multi media

- Supports various types of multi-media from a single system
- Supports various types of multi-business logic from a single system
- Supports a wide range of channel services, including multi media(voice, video) content

### ✔ High capacity & scalability

- A single system may connect up to 600 channels
- Consistent use by major banks and communication firms in Korea attest to the product's reliability.

### ✔ Easy management

- One Stop Single View management interface
- Service maintenance without interruptions in service (scenarios, messages, system configuration)
- Powerful logging, tracking, and CDR management

# Bridgetec service creation platform and media engine

## Features

- **Multi service & multi scenario**
  - Supports DNIS-based multi-service and multi-scenario
  - Provides multiple services on a single platform
  - Supports ASP services
- **Media**
  - Supports 2G voice and 3G video
  - Supports TDM voice and IP voice/video media
- **Protocol**
  - Supports ISDN, CAS, SS7 protocol based on TDM Network, and SIP protocol based on IP Network
- **Codec**
  - Supports G.711, G.723, G.729 voice codecs and H264 video codec
- **Service generation tools**
  - Supports GUI-based service development tools, and provides drag-and-drop and diagram icon functions
- **Visual debugging**
  - Supports real-time simulation and debugging during service development
  - service error detection and improved reliability
- **Support**
  - Supports NMS and Dialogic TDM/IP boards and BT-HMP

## System specifications

- **Installation environment**
  - OS : Solaris X86, Linux (Redhat Enterprise, CentOS etc.)
  - DB : Oracle 11g
- **Minimum system requirements**
  - TDM Version (CPCI Chassis Type)
    - CPU : Intel Quadcore 2.13 GHz
    - RAM : 4GByte / HDD : 146GByte
  - IP Version
    - CPU : Intel Quad Core 2.4 GHz
    - RAM : 4GByte / HDD : 146GByte

## References



HANA SK CARD

SAMSUNG CARD

